

# CARLO RAIMONDI



Tower Crane

## Top Less MR66+3

Luffing Jib Crane

### MR66+3

Disponibile con elementi di torre da 12 o 6 metri, può essere installata in un solo giorno. Dispone di un braccio da 45 metri, facile da assemblare e semplicissimo da montare. Sulla controfreccia tutti i meccanismi sono montati e cablati e il giro della fune di sollevamento è già eseguito.

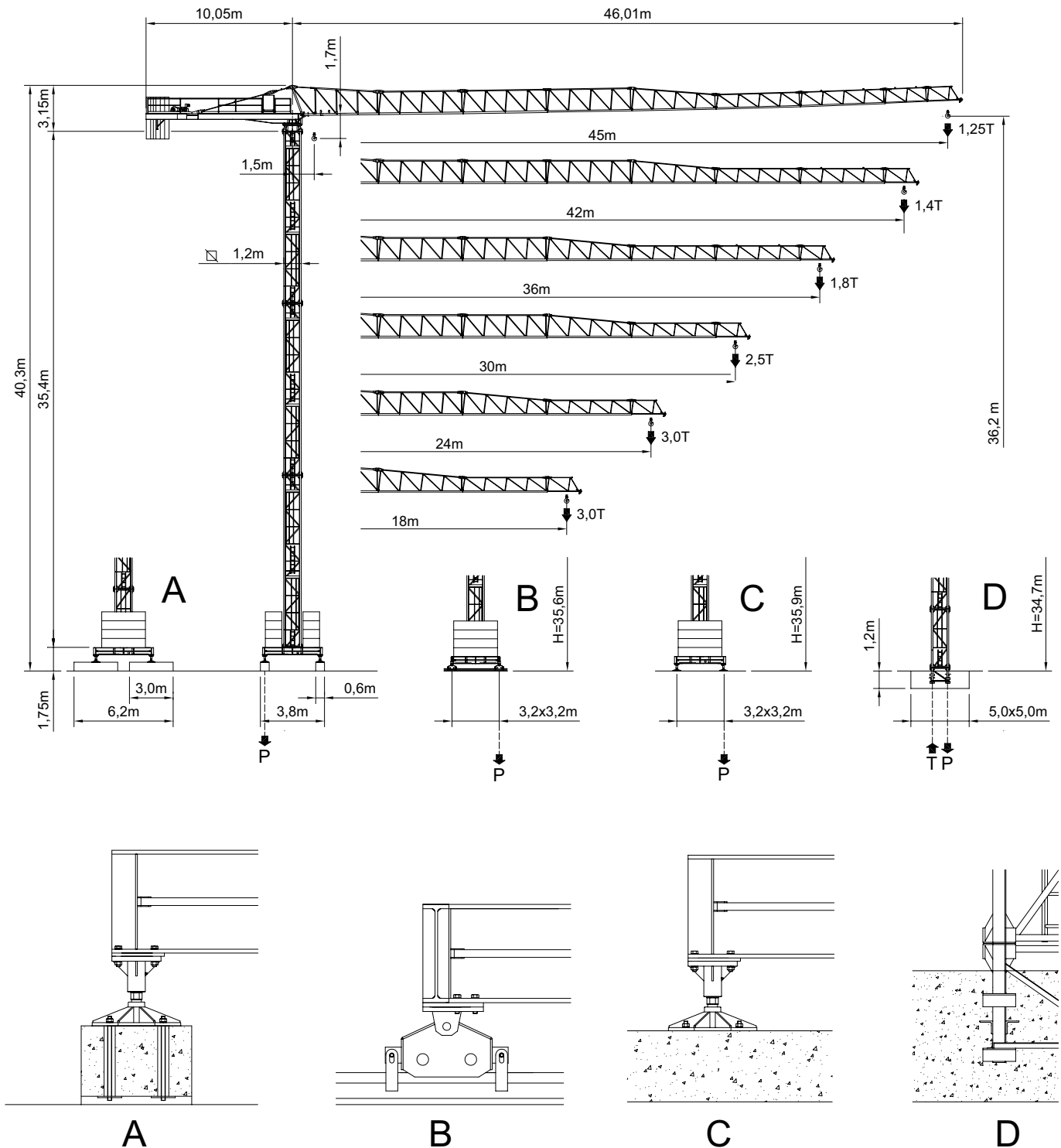
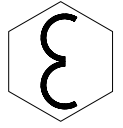
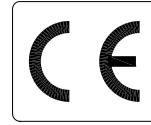
### MR66+3

*Available with 6 or 12 m. tower components, this crane can be assembled in just one day. It is equipped with a 45 m. jib, very easy to be assembled. All mechanisms are installed and wired on the counter-jib and the lifting rope coil is already executed.*





MGM SRL CORRADINI  
VIA CONCORDIA 42  
PADERNO DUGNANO (MI)  
02/9182783 335/7581442-3

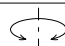
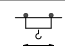

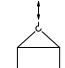


# City Crane MR 66+3

GRU A TORRE A MONTAGGIO RAPIDO  
«CITY TOWER CRANE»



RAGGI E PORTATE  
RADIUS AND S.W.L.  
PORTEE ET CHARGE UTILE  
AUSLADUNG UND TRAGFAHIGKEIT

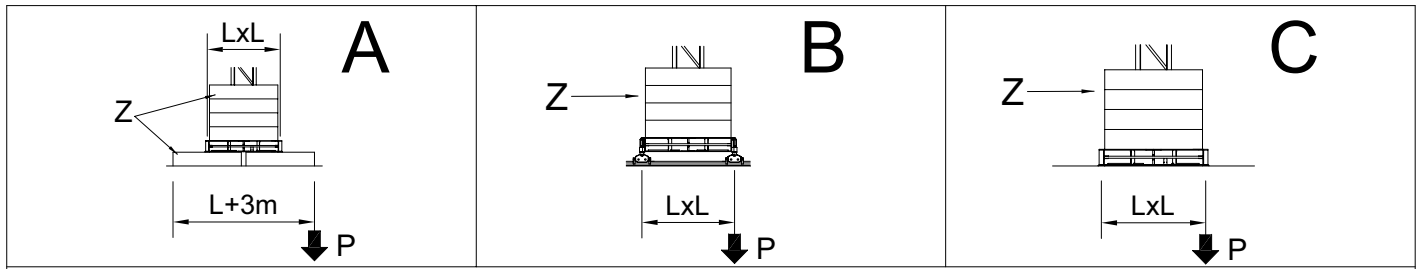
Portata max / Max s.w.l. Charge maxi / Max. Tragfähigkeit		2500 kg. 				3000 kg. 				2500  / 5000 kg. 					
Braccio / Jib Ausleger / Flèche	m.	30	36	42	45	30	36	42	45	18	24	30	36	42	45
Campo di portata max da Max s.w.l. range from Charge maxi de Max. Tragfähigkeit von	1,5 m a to à bis	30,0	27,0	25,4	24,8	25,4	22,9	21,6	21,0	15,6	15,5	15,5	14,0	13,2	12,8
Raggi (m.) Radii (m.) Portée (m.) Ausladung (m.)	12	2500	2500	2500	2500	3000	3000	3000	3000	5000	5000	5000	5000	5000	5000
	14	2500	2500	2500	2500	3000	3000	3000	3000	5000	5000	5000	4993	4650	4510
	16	2500	2500	2500	2500	3000	3000	3000	3000	4899	4872	4861	4303	4005	3884
	18	2500	2500	2500	2500	3000	3000	3000	3000	4300	4275	4266	3772	3509	3401
	20	2500	2500	2500	2500	3000	3000	3000	3000		3803	3794	3351	3115	3019
	22	2500	2500	2500	2500	3000	3000	2943	2863		3418	3411	3009	2796	2708
	24	2500	2500	2500	2500	3000	2852	2670	2596		3100	3093	2726	2531	2451
	26	2500	2500	2439	2372	2934	2608	2439	2372			2826	2488	2308	2234
	28	2500	2399	2243	2180	2701	2399	2243	2180			2597	2284	2117	2049
	30	2500	2218	2073	2015	2500	2218	2073	2015			2400	2108	1953	1889
	32		2061	1925	1871		2061	1925	1871				1955	1809	1750
	34		1923	1795	1744		1923	1795	1744				1820	1683	1627
	36		1800	1679	1631		1800	1679	1631				1700	1571	1518
	38			1576	1530			1576	1530					1471	1421
	40			1484	1440			1484	1440					1381	1334
	42			1400	1359			1400	1359					1300	1255
45				1250				1250						1150	

		Velocità / Speed / Vitesse / Geschwindigkeit		Potenza / Power / Puissance / Leistung	
Rotazione-Slewing Orientation-Schwenken		0,37 / 0,7 / 1,0 min <sup>-1</sup>		4,0 Kw	
Carrello-Trolley Chariot-Katzfahren		28,5 / 57 m/min		1,1/2,2Kw	
Traslazione-Rail Translation-Kranfahren		14 m/min		2 x 2,9 Kw	
Argano-Winch Treuril-Hubwerk		Marcia Step Vitesse Gang	Carico / velocità - Load / speed Charge / vitesse - Tragfähigkeit / Geschwindigkeit		
					
Tipo Type Type Typ	15 HP 11 Kw - 2,5	1	2500 Kg - 5,2 m/min		-
		2	2500 Kg - 21 m/min		-
		3	1250 Kg - 42 m/min		-
	25 HP 18,4 Kw - 3	1	3000 Kg - 7,5 m/min		-
		2	3000 Kg - 30 m/min		-
		3	1500 Kg - 60 m/min		-
	25 HP 18,4 Kw - 5	1	2500 Kg - 8,8 m/min		5000 Kg - 4,4 m/min
		2	2500 Kg - 35 m/min		5000 Kg - 17,5 m/min
		3	1250 Kg - 70 m/min		2500 Kg - 35 m/min
	25 HP 18,4 Kw - 3 VF	1	3000 Kg - 6 m/min		-
		2	3000 Kg - 30 m/min		-
		3	1500 Kg - 60 m/min		-
		4	1000 Kg - 72 m/min		-
	25 HP 18,4 Kw - 5 VF	1	2500 Kg - 8,8 m/min		5000 Kg - 4,4 m/min
		2	2500 Kg - 35 m/min		5000 Kg - 17,5 m/min
		3	1250 Kg - 70 m/min		2500 Kg - 35 m/min
4		840 Kg - 84 m/min		1700 Kg - 42 m/min	

Conforme alla direttiva CEE 85/534 sul livello acustico - In compliance with the EEC 84/534 instruction on noise level - Conforme à directive CEE 84/534 sur le niveau acoustique  
Gemäss EWG 84/534 über Schall - Leistungspegel - Conforme con la directive CEE 84/534 sobre el nivel acustico.

FORZA MOTRICE TOTALE TOTAL INSTALLED POWER PUISSANCE TOTALE DES MOTEURS GESAMT-MOTORENLEISTUNG	11 Kw (15HP)	18,4 Kw (25HP)
	23 Kw	31 Kw

ALTEZZA SOTTO-GANCIO, ZAVORRA DI BASE, REAZIONI  
H.U.H., MAX. BASE BALLAST AND CORNER PRESSURE  
H.S.C., LEST DE BASE MAXI ET REACTIONS  
HAKENHOHEN, MAXIMALE ZENTRALBALLASTE UND ECKKRAFT



SU BASE / ON CROSSBASE  
SUR CHASSIS / AUF KREUZRAHME

L = 3,2 m (□ 1,2m)

H (m)	max. Z (t)	P (kN)	H (m)	max. Z (t)	P (kN)	H (m)	max. Z (t)	P (kN)
36,0	49,5	457	35,6	49,5	444	35,2	49,5	429
30,1	49,5	356	29,7	49,5	357	29,3	49,5	352
24,2	49,5	333	23,8	49,5	334	23,4	49,5	330
18,3	49,5	314	17,9	49,5	305	17,5	49,5	311
12,4	39,6	272	12,0	39,6	272	11,6	39,6	270

SU BASE / ON CROSSBASE  
SUR CHASSIS / AUF KREUZRAHME

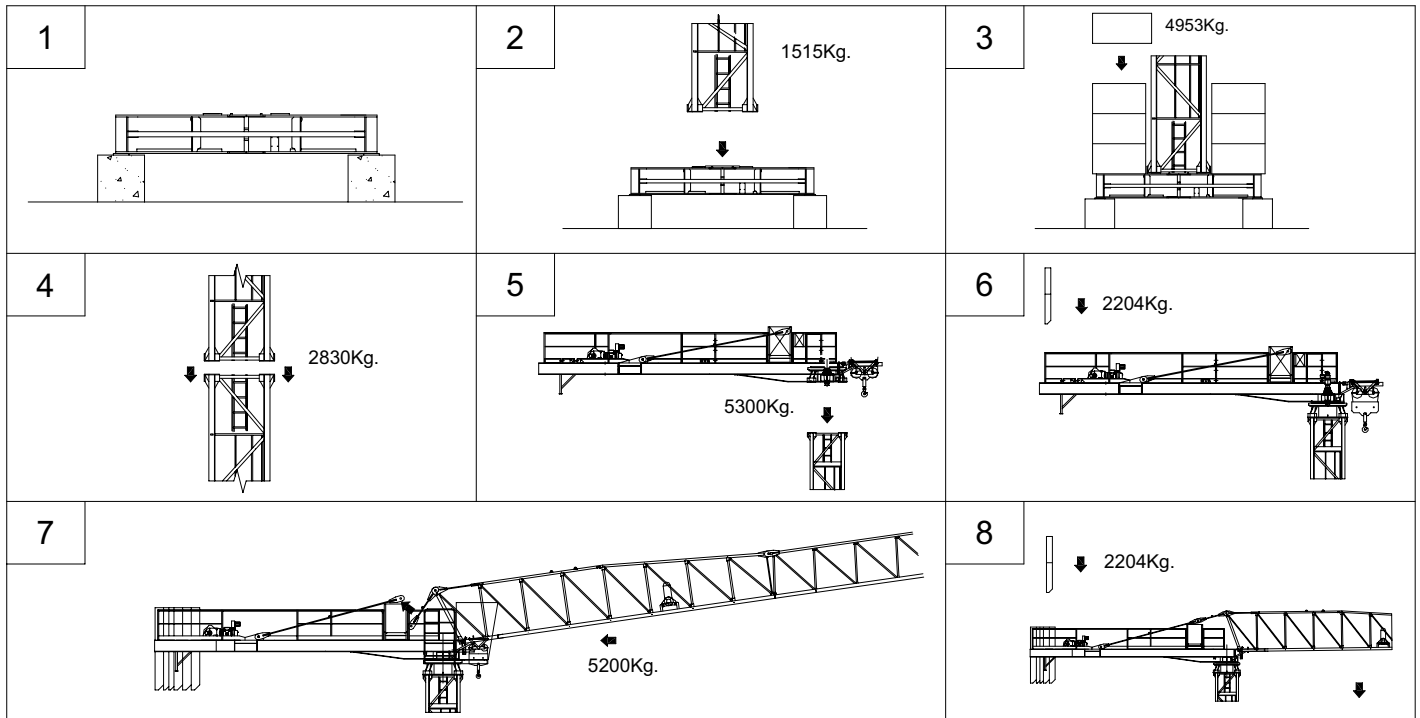
L = 3,8 m (□ 1,2m)

H (m)	max. Z (t)	P (kN)	H (m)	max. Z (t)	P (kN)	H (m)	max. Z (t)	P (kN)
40,2	49,5	508	39,8	49,5	497	39,4	49,5	482
36,2	49,5	389	35,8	49,5	385	35,4	49,5	376
30,3	49,5	331	29,9	49,5	333	29,5	49,5	329
24,4	39,6	286	24,0	39,6	288	23,6	39,6	284
18,5	39,6	269	18,1	39,6	271	17,7	39,6	268

SU PLINTO / STATIONARY  
SUR PIEDS DE SCELLEMENT / STATIONAR

H (m)	17,0	22,9	28,8	34,7	38,7
T (kN)	437	482	535	582	627
P (kN)	332	371	417	454	761
qmax (Kg/cm <sup>2</sup> )	0,91	0,98	1,08	1,22	1,69

SEQUENZA DI MONTAGGIO / ASSEMBLING SEQUENCE  
SEQUENCE DE MAONTAGE / AUFSTELLUNG SEQUENCE



CARLO RAIMONDI FU R. SPA

Corso Garibaldi, 253  
20025 Legnano - ITALY  
Tel. 0331 / 548061-450239