

CARLO RAIMONDI



Tower Crane

City Crane MR123

Luffing Jib Crane

MR123

Realizzata con materiali strutturali di alta qualità, si monta facilmente e in poco tempo, per operare al meglio anche in centri urbani. Un'ottima sintesi di semplicità, efficienza e affidabilità.

MR123

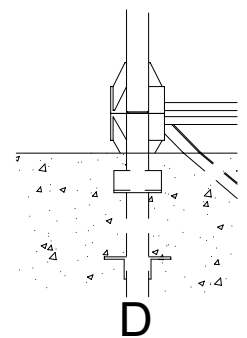
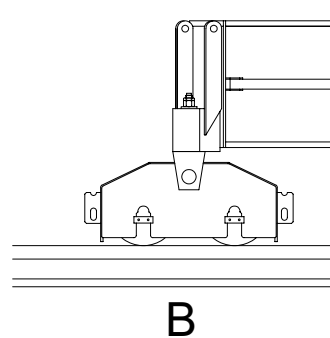
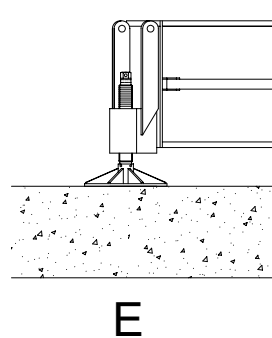
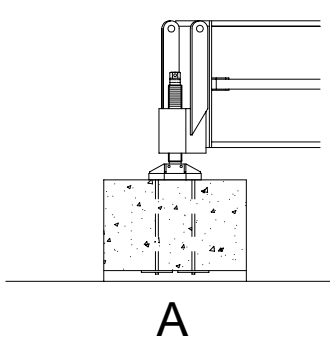
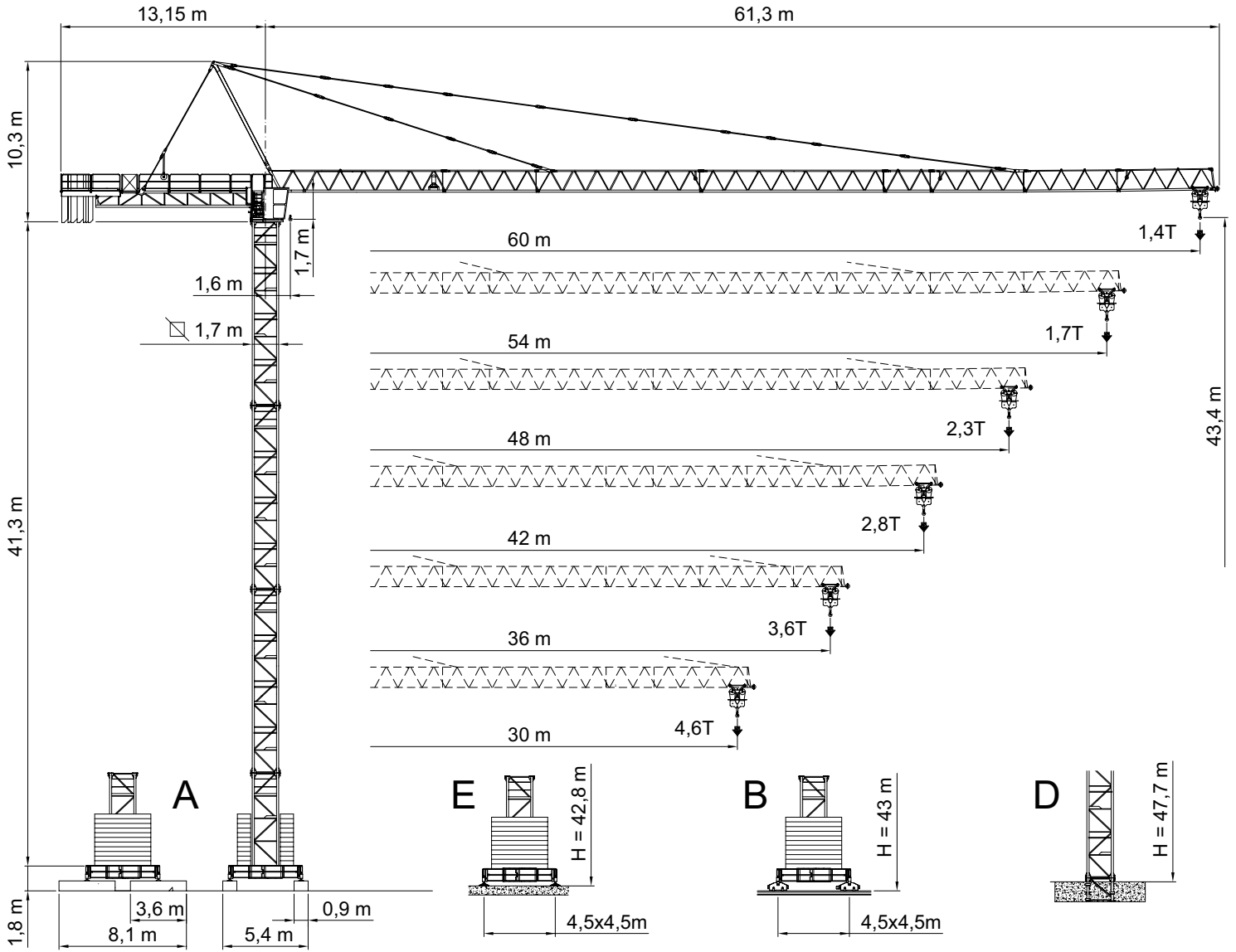
Manufactured with high-level structural materials, this crane can be assembled easily and quickly and is ideal for operation in urban areas too. A perfect synthesis of simplicity, efficiency and reliability.

City Crane MR 123





GRU A TORRE A MONTAGGIO RAPIDO
«CITY» TOWER CRANE



A4 FEM1,001



RAGGI E PORTATE
RADIUS AND S.W.L.
PORTEE ET CHARGE
AUSLADUNG UND TRAGFAHIGKEIT

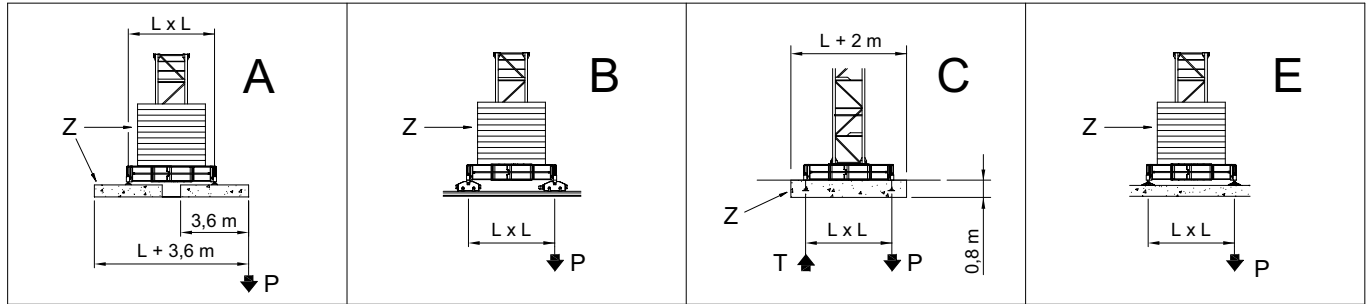
Portata max / Max s.w.l. Charge maxi / Max. Tragfähigkeit		6000 kg.  / 3000 kg. 						8000 kg.  / 4000 kg. 					
Sbraccio / Radius Ausladung / Portée	m.	30	36	42	48	54	60	30	36	42	48	54	60
Campo di portata max da Max s.w.l. range from Charge maxi de Max. Tragfähigkeit von	1,7 m a to à bis	23,7	23,0	21,8	21,2	18,9	18,2	18,5	18,0	17,1	16,8	15,1	14,7
Sbraccio (m.) Radius (m.) Portée (m.) Ausladung (m.)	12	6000	6000	6000	6000	6000	6000	8000	8000	8000	8000	8000	8000
	14	6000	6000	6000	6000	6000	6000	8000	8000	8000	8000	8000	8000
	16	6000	6000	6000	6000	6000	6000	8000	8000	8000	8000	7532	7279
	18	6000	6000	6000	6000	6000	6000	8000	8000	7596	7418	6579	6356
	20	6000	6000	6000	6000	5640	5407	7331	7132	6736	6577	5826	5626
	22	6000	6000	5940	5766	5057	4846	6578	6398	6039	5895	5215	5034
	24	5928	5736	5382	5223	4575	4382	5955	5791	5463	5331	4710	4545
	26	5415	5239	4912	4766	4169	3992	5431	5280	4979	4857	4286	4134
	28	4977	4814	4512	4376	3824	3660	4985	4845	4566	4453	3924	3783
	30	4600	4448	4166	4040	3526	3373	4600	4470	4209	4105	3612	3481
	32		4129	3865	3748	3266	3123		4142	3899	3801	3340	3217
	33		3984	3729	3615	3148	3010		3994	3758	3664	3217	3098
	34		3849	3601	3490	3038	2903		3855	3626	3534	3101	2985
	36		3600	3366	3262	2835	2709		3600	3384	3298	2889	2780
	38			3157	3058	2655	2535			3169	3087	2700	2597
	40			2969	2876	2493	2379			2975	2897	2530	2432
	42			2800	2711	2346	2238			2800	2726	2377	2284
	44				2561	2214	2111				2571	2238	2149
	46				2425	2093	1994				2429	2111	2027
	48				2300	1982	1888				2300	1995	1914
50					1880	1790					1889	1811	
52					1787	1700					1791	1716	
54					1700	1616					1700	1628	
56						1539						1547	
58						1467						1471	
60						1400						1400	

Solo tiro semplice: +100 Kg. / Two reeving only: +100 Kg. / Mouflage à deux brins seulement: +100 Kg. / Nur zwei-stränge: +100 Kg.

BRACCIO E CONTRAPPESO
JIB AND COUNTERWEIGHT
FLECHE ET CONTREPOIDS
AUSLEGER UND GEGENGEWICHTSBALLAST

Braccio / Jib Flèche / Ausleger	(m)	30	36	42	48	54	60
Contrappeso / Counterweight Contrepoids / Gegengewicht	(t)	7,23	8,68	10,13	12,755	14,475	18,09
Composizione Composition Komposition	Tipo / Type	Quantità / Quantity / Nombre / Anzahl					
	A123	2	2	2	2	2	3
	B123		1	2	2	2	2
	C123				1	1	1
	D123					1	1

ALTEZZA SOTTO-GANCIO, ZAVORRA DI BASE, REAZIONI
 H.U.H., MAX. BASE BALLAST AND CORNER PRESSURE
 H.S.C., LEST DE BASE MAXI ET REACTIONS
 HAKENHOHEN, MAXIMALE ZENTRALBALLASTE UND ECKKRAFT



SU BASE / ON CROSSBASE
 SUR CHASSIS / AUF KREUZRAHME **L = 3,8 m**

H (m)	max. Z (t)	P (kN)	H (m)	max. Z (t)	P (kN)	H (m)	max. Z (t)	T (kN)	P (kN)	H (m)	max. Z (t)	P (kN)
13,9	65,28	491	13,5	63,8	491	13,0	61,9	119	331	13,3	63,8	486
19,8	65,28	515	19,4	63,8	515	18,9		131	354	19,2	63,8	509
25,7	71,08	556	25,3	69,6	556	24,8		147	382	25,1	69,6	551
31,6	76,88	615	31,2	81,2	615	30,7		166	413	31,0	81,2	609
37,5	88,48	624	37,1	87,0	666	36,6		190	450	36,9	87,0	660

SU BASE / ON CROSSBASE
 SUR CHASSIS / AUF KREUZRAHME **L = 4,5 m**

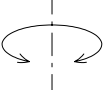
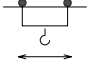
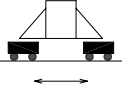
H (m)	max. Z (t)	P (kN)	H (m)	max. Z (t)	P (kN)	H (m)	max. Z (t)	T (kN)	P (kN)	H (m)	max. Z (t)	P (kN)
13,9	47,88	395	13,5	40,6	389	13,0	77,6	77	290	13,3	40,6	377
19,8	47,88	415	19,4	40,6	409	18,9		85	310	19,2	40,6	397
25,7	47,88	452	25,3	46,4	434	24,8		96	334	25,1	46,4	423
31,6	47,88	480	31,2	46,4	476	30,7		111	360	31,0	46,4	460
37,5	59,48	528	37,1	58,0	526	36,6		129	391	36,9	58,0	505
43,4	76,88	704	43,0	75,4	694	42,5	182	462	42,8	75,4	658	

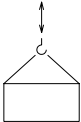


SU BASE / ON CROSSBASE
 SUR CHASSIS / AUF KREUZRAHME **L = 6 m**

H (m)	max. Z (t)	P (kN)	H (m)	max. Z (t)	P (kN)	H (m)	max. Z (t)	T (kN)	P (kN)	H (m)	max. Z (t)	P (kN)
14,0	18,88	300	13,6	17,4	296	13,1	117,5	24	257	13,4	17,4	287
19,9	18,88	315	19,5	17,4	311	19,0		29	274	19,3	17,4	305
25,8	18,88	336	25,4	17,4	332	24,9		36	292	25,2	17,4	327
31,7	18,88	369	31,3	17,4	365	30,8		45	314	31,1	17,4	360
37,6	24,68	399	37,2	23,2	395	36,7		57	338	37,0	23,2	390
43,5	36,28	500	43,1	34,8	496	42,6		85	386	42,9	34,8	492
49,4	53,68	655	49,0	52,2	651	48,5		154	466	48,8	52,2	646

SU PLINTO / STATIONARY
 SUR PIEDS DE SCELLEMENT / STATIONAR

H (m)	12,3	18,2	24,1	30,0	35,9	41,8	47,7	T (kN)	398	437	476	488	760	1013	1266	P (kN)	595	646	696	778	1007	1270	1535	q max. (Kg/cm ²)	0,93	0,98	1,05	1,13	1,23	1,62	2,38
H (m)	53,6	T (kN)	1467	P (kN)	1760	q max. (Kg/cm ²)	1,92																								

		Velocità / Speed / Vitesse / Geschwindigkeit	Potenza / Power / Puissance / Leistung
Rotazione Slewing Orientation Schwenken		0,26 / 0,48 / 0,7 min ⁻¹	2 x 4 Kw
Carrello Trolley Chariot Katzfahren		27 / 54 m/min	5,5 Kw
		18,8 / 35,2 / 54 m/min Progressivo - Progressive	5,5 Kw
Traslazione Rail Translation Kranfahren		20 m/min	2 x 3 Kw


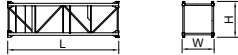








Argano Winch Treuril Hubwerk		Marcia Step Vitesse Gang	Carico / velocità - Load / speed Charge / vitesse - Tragfähigkeit / Geschwindigkeit	
				
Tipo Type Type Typ	25 HP 18,4 Kw - 6	1	3000 Kg - 7,5 m/min	6000 Kg - 3,7 m/min
		2	3000 Kg - 30 m/min	6000 Kg - 15 m/min
		3	1500 Kg - 60 m/min	3000 Kg - 30 m/min
	33 HP 24,3 Kw - 8	1	4000 Kg - 7 m/min	8000 Kg - 3,5 m/min
		2	4000 Kg - 28 m/min	8000 Kg - 14 m/min
		3	2000 Kg - 56 m/min	4000 Kg - 28 m/min
	25 HP 18,4 Kw - 6VF INVERTER	1	3000 Kg - 6 m/min	6000 Kg - 3 m/min
		2	3000 Kg - 30 m/min	6000 Kg - 15 m/min
		3	1500 Kg - 60 m/min	3000 Kg - 30 m/min
			1000 Kg - 72 m/min	2000 Kg - 36 m/min
	33 HP 24,3 Kw - 8VF INVERTER	1	4000 Kg - 5,6 m/min	8000 Kg - 2,8 m/min
		2	4000 Kg - 28 m/min	8000 Kg - 14 m/min
		3	2000 Kg - 56 m/min	4000 Kg - 28 m/min
			1300 Kg - 67 m/min	2600 Kg - 33,6 m/min
	50 HP 37 Kw - 8VF INVERTER	1	4000 Kg - 9 m/min	8000 Kg - 5 m/min
		2	4000 Kg - 28 m/min	8000 Kg - 14 m/min
		3	4000 Kg - 45 m/min	4000 Kg - 23 m/min
		4	2509 Kg - 75 m/min	4689 Kg - 38 m/min
		5	1907 Kg - 98 m/min	3516 Kg - 49 m/min

Conforme alla direttiva CEE 84/534 sul livello acustico - In compliance with the EEC 84/534 instruction on noise level - Conforme à directive CEE 84/534 sur le niveau acoustique
Gemäss EWG 84/534 über Schall - Leistungspegel - Conforme con la direttiva CEE 84/534 sobre el nivel acustico.

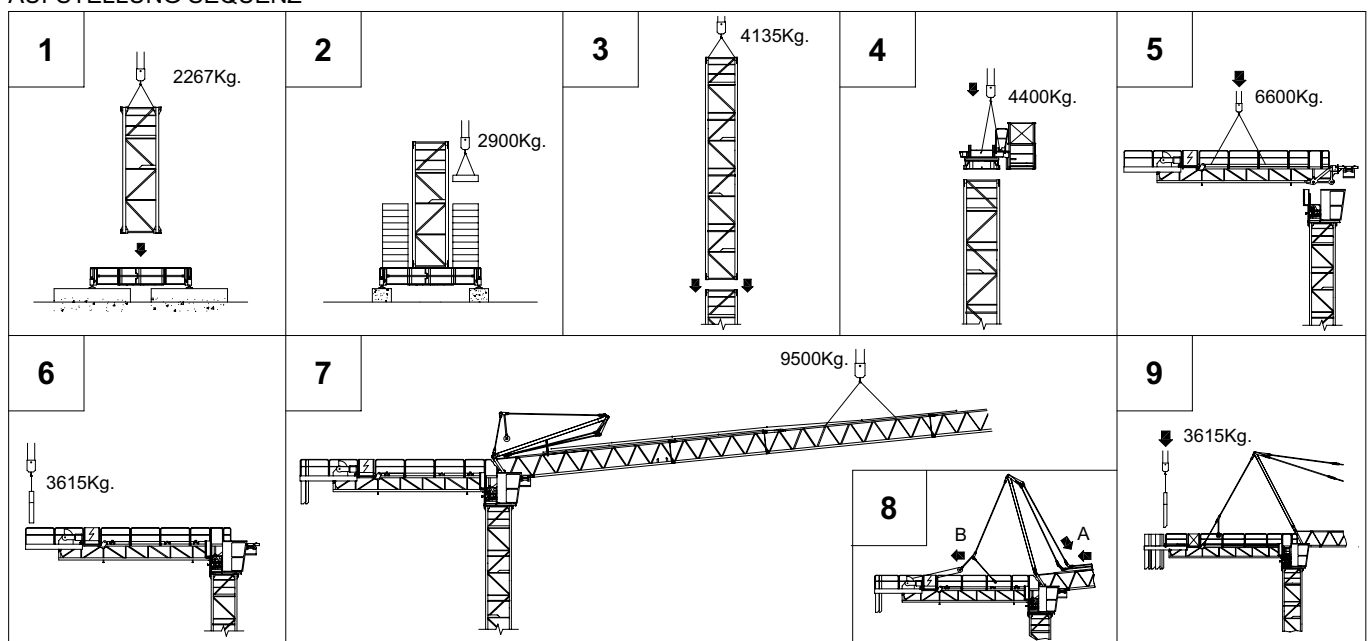
FORZA MOTRICE TOTALE TOTAL INSTALLED POWER PUISSANCE TOTALE DES MOTEURS GESAMT-MOTORENLEISTUNG	18,4 Kw (25HP)	24,3 Kw (33HP)	37 Kw (50HP)
	38 Kw	44 Kw	57 Kw

LISTA DEI PESI / PACKING LIST
LISTE DE COLISAGE / KOLLI-LISTE

Pos. Item	Pezzi Pieces	Denominazione Description	Schizzo Sketch	Dimensioni Dimensions			Peso Weight (Kg)		
				L	W	H	Unit.	Total.	
1	1	Elemento di freccia Jib element Elément de flèche Ausleger	N°1		11,425	1,300	1,650	1352	1352
	1		N°2		6,170	1,300	1,477	646	646
	1		N°3		10,670	1,300	1,477	973	973
	1		N°4		11,970	1,300	1,477	1070	1070
	1		N°5		3,170	1,300	1,477	335	335
	1		N°6		6,160	1,300	1,477	626	626
	2		N°7-8		6,160	1,300	1,477	448	996
	1	Puntale freccia Jib point Elément pointe Spitzelement		1,315	1,290	1,525	110	110	
2	1	Cuspide A frame Pointe Turmspitze		7,830	0,400	1,145	590	590	
3	1	Controfreccia,organo di sollev., quadro elettrico,carrello freccia etc. Counterjib, hoisting winch, trolley jib, electrical box etc. Contreflèche tournante, treuil de levage, chariot de flèche, armoire électrique etc. Gegenausleger, Hubwinde, Laufkatze Schaltschrank etc.		13,250 (L1) 11,950	1,935	2,300	5925 5565	5925 5565	
	1	Controfreccia,organo di sollev., quadro elettrico,carrello freccia,portabloccchi. Counterjib, hoisting winch, trolley jib, electrical box, element for counterweight. Contreflèche,treuil de levage, chariot de flèche, armoire électrique, element terminal. Gegenausleger, Hubwinde, Laufkatze Schaltschrank Gegenwichtelement.		15,450	1,935	2,300	6600	6600	
4	1	Girevole, quadro elettrico, porta-cabina cabina etc. Turntable, electrical box, service and access balcony, cabin etc. Plateforme tournante, cabine, armoire elect. Drehwerk, Schaltschrank, Kabinepodest, Kabine.		2,470	3,590	2,190	4400	4400	
5	3	Blocchi di contrappeso Counterweight block Contre-poids Gegengewichtsbloecke		A123	1,475	0,400	3,070	3615	10845
	2			B123	1,475	0,160	3,070	1450	2900
	1			C123	1,475	0,290	3,070	2625	2625
	1			D123	1,475	0,190	3,070	1720	1720

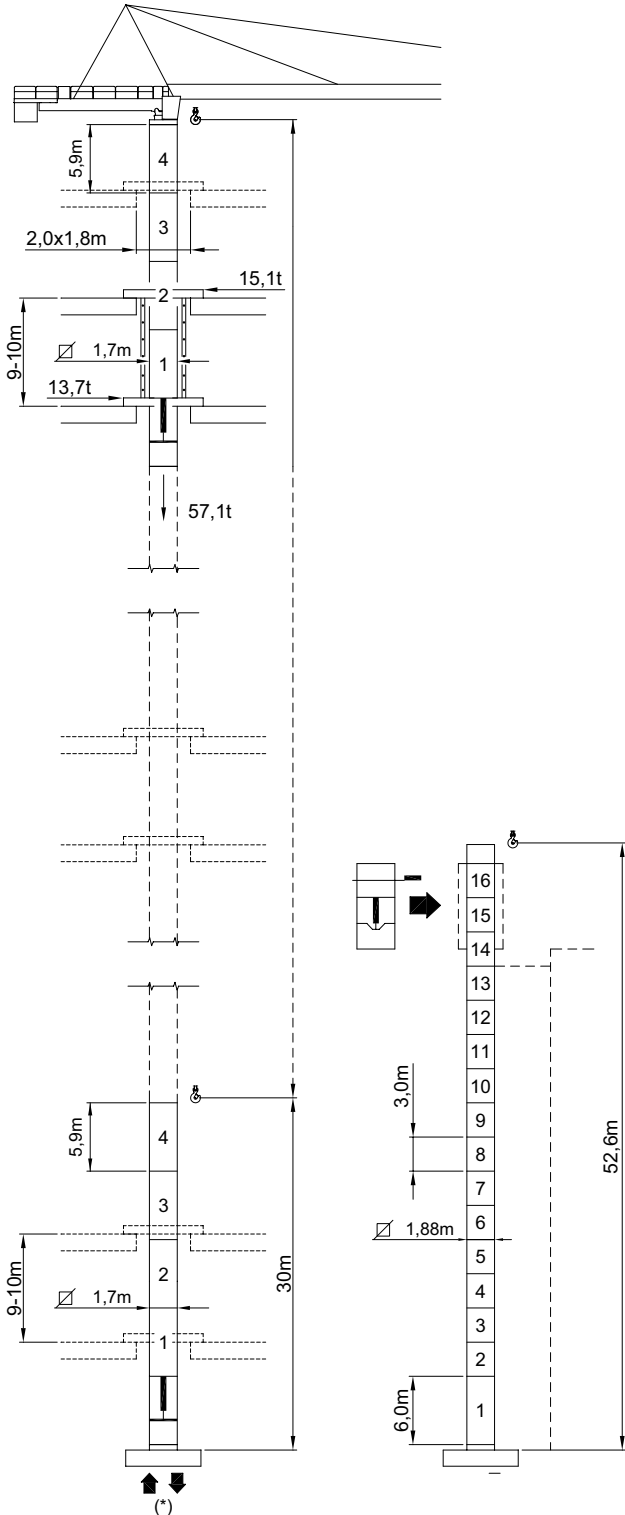
Pos. Item	Pezzi Pieces	Denominazione Description	Schizzo Sketch	Dimensioni Dimensions			Peso Weight (Kg)	
				L	W	H	Unit.	Total.
6	-	Elemento di torre Tower element Elément de mature Turmstück		2,950	1,900	1,700	1335	1335
7	-			5,900	1,900	1,700	2267	2267
8	-			11,800	1,900	1,700	4135	4135
9	1	Tronchetto di fondazione Expendable foundation element Elément a sceller Fundamentanker		1,465	1,980	1,980	830	830
10	1	Trave principale della crociera di base Base main beam Poutre de chassis de base Hauptträger für Kreuzgelenk		6,524	0,730	0,860	2270	2270
11	2	Semitrave della crociera di base Half base beam Semipoutre de chassis de base Halbträger für Kreuzgelenk		3,207	0,730	0,860	1140	2280
12	4	Blocco di appoggio Concrete pad Sabot en béton Betonfuss (B4)		3,600	0,900	0,640	4720	18880
13	2	Bilancino di traslazione folle Driven bogie Boggie fou Fahrschemel ohne motorantrieb		1,315	0,222	0,540	600	1200
14	2	Bilancino di traslazione motorizzato Driving bogie Boggie motorisée Fahrschemel mit motorantrieb		1,427	0,492	0,540	765	1530
15	26	Blocco di zavorra Base ballast block Lest de base Grundballastblöcken (GB3)		3,600	1,200	0,300	2900	75400

SEQUENZA DI MONTAGGIO
ASSEMBLING SEQUENCE
SEQUENCE DE MONTAGE
AUFSTELLUNG SEQUENZ



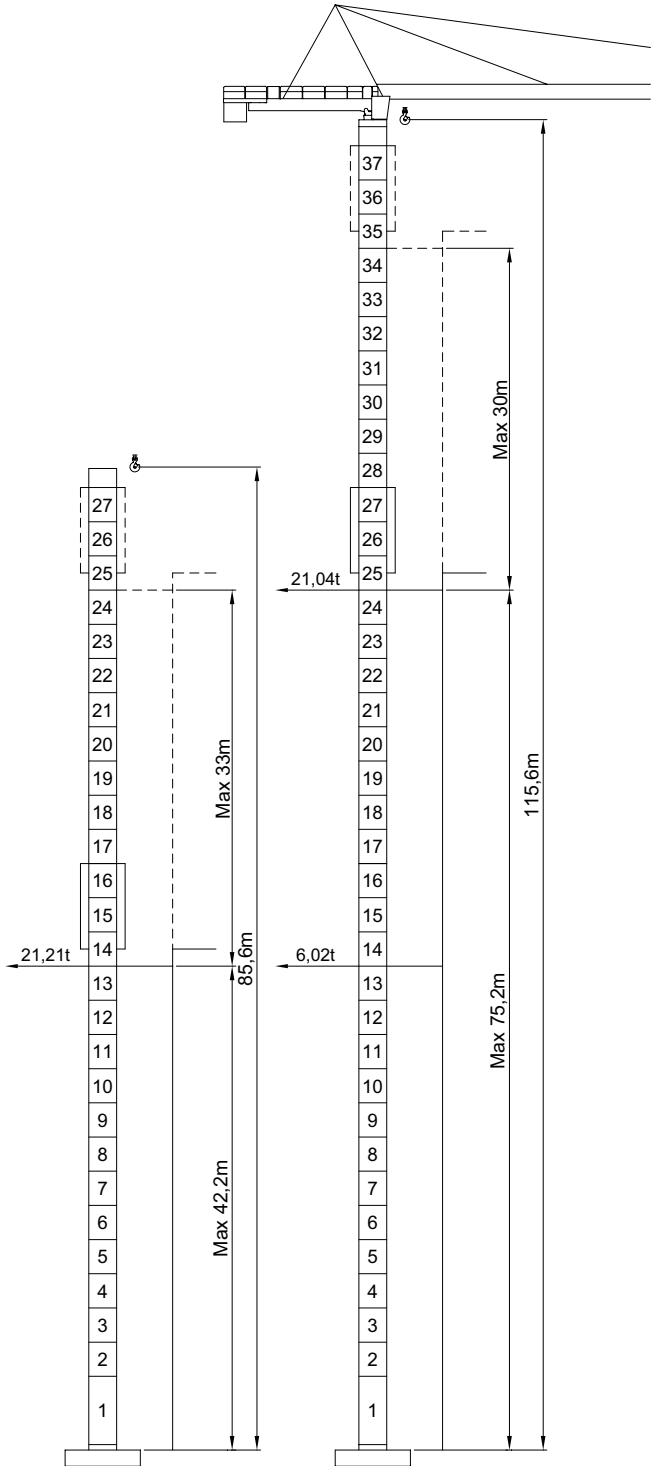
MR 123RI

RAMPANTE
FLOOR CLIMBING
TELESCOPABLE SUR DALLES
KLETTERKRANE IM GEBAUDE



MR 123HC S

A SOPRALZO IDRAULICO
EXTERNAL CLIMBING
TELESCOPABLE
KLETTERKRANE



* Vedi tabella a pag. 4 - See table at page 4 - Voir table à la page 4 - Siehe tafel an seite 4

