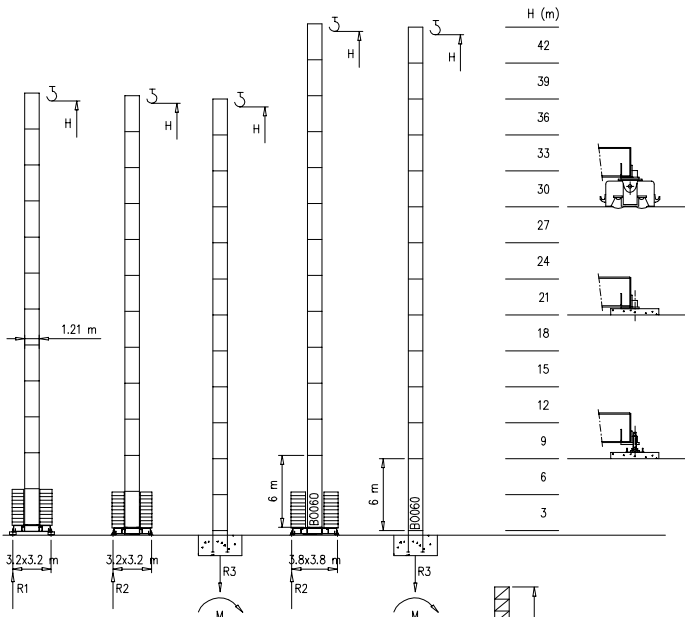


- S1210 – 1.21x1.21 m
- S1700 – 1.70x1.70 m

Torre/Reazioni - Masts/Reactions - Mat/Réactions - Maste/Eckdrücke - Mástil/Reacciones - Tramo/Reacções

S1210

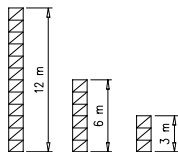
25 m → 42 m



H=37-42 m	
R1	
R2	69 t
R3	40 t
M	185 tm

H=24-36 m	
R1	53 t
R2	53 t
R3	25.6 t
M	116 tm

H=0-23 m	
R1	49 t
R2	47 t
R3	22 t
M	80 tm

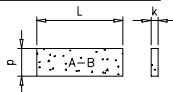


Peso zavorra - Ballast weight - Poids du lest - Ballastgewicht - Peso de lastre



H	n'	Tot.
0-18 m	12 A-B	36000 kg
19-36 m	18 A-B	54000 kg
37-42 m	24 B	72000 kg

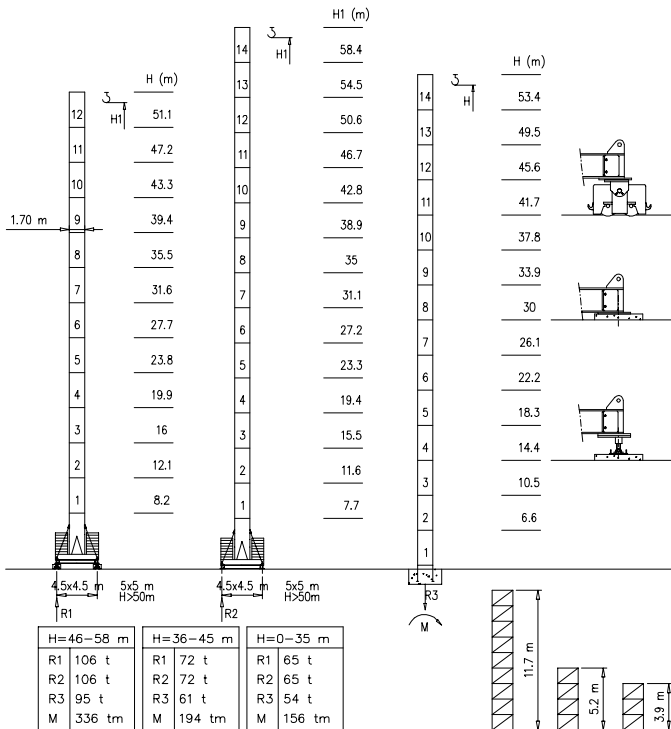
	A	B
L	3.6m	4.0m
k	0.3m	1.2m
d	1.15m	0.19m



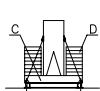
Torre/Reazioni - Masts/Reactions - Mat/Réactions - Maste/Eckdrücke - Mástil/Reacciones - Tramo/Reacções

S1700

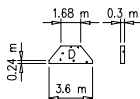
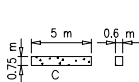
25 m → 42 m



Peso zavorra - Ballast weight - Poids du lest - Ballastgewicht - Peso de lastre



H	n*	Tot.
0-35 m	2C+ 18D	60800 kg
36-45 m	2C+ 22D	72000 kg
46-58 m	2C+ 32D	105000 kg



Curve di carico - Courbes de charges - Load diagrams - LastKurven - Curvas de cargas

Pmax 2500 kg

	8250 kg	42 m	2	22	24	26	28	30	32	34	36	38	40	42	m
			2500	2500	2300	2000	1900	1800	1550	1450	1350	1200	1150	1050	kg
	8250 kg	40 m	2	22	24	26	28	30	32	34	36	38	40	m	
			2500	2500	2300	2000	1900	1800	1600	1500	1400	1270	1200	kg	
	6600 kg	37 m	2	22	24	26	28	30	32	34	36	37	m		
			2500	2500	2300	2000	1900	1800	1600	1500	1400	1300	kg		
	4950 kg	31 m	2	22	24	26	28	30	31	m					
			2500	2500	2300	2000	1900	1800	1700	kg					
	4950 kg	25 m	2	22	24	25	m								
			2500	2500	2300	2100	kg								

Pmax 3000 kg

	8250 kg	42 m	2	18	20	22	24	26	28	30	32	34	36	38	40	42	m
			3000	3000	2800	2500	2300	2000	1900	1800	1550	1450	1350	1200	1150	1050	kg
	8250 kg	40 m	2	18	20	22	24	26	28	30	32	34	36	38	40	m	
			3000	3000	2800	2500	2300	2000	1900	1800	1600	1500	1400	1270	1200	kg	
	6600 kg	37 m	2	18	20	22	24	26	28	30	32	34	36	37	m		
			3000	3000	2800	2500	2300	2000	1900	1800	1600	1500	1400	1300	kg		
	4950 kg	31 m	2	18	20	22	24	26	28	30	31	m					
			3000	3000	2800	2500	2300	2000	1900	1800	1700	kg					
	4950 kg	25 m	2	18	20	22	24	25	m								
			3000	3000	2800	2500	2300	2100	kg								

Pmax 4000/2000 kg

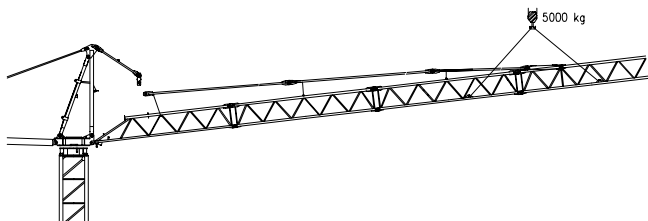
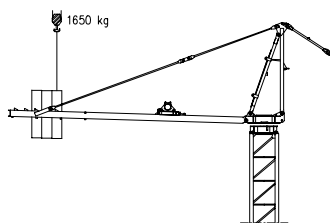
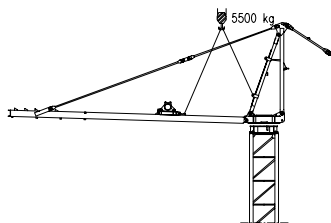
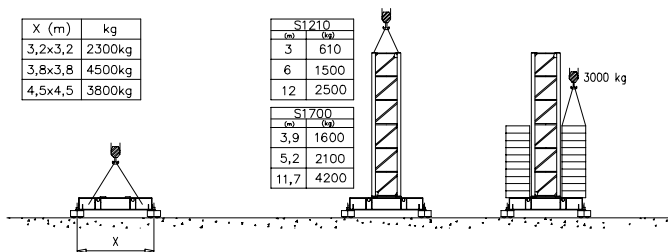
	8250 kg	42 m	2	14	16	18	20	22	24	26	28	30	32	34	36	38	40	42	m
			4000	4000	3600	3200	2800	2500	2300	2000	1900	1800	1550	1450	1350	1200	1150	1050	kg
	8250 kg	40 m	2	14	16	18	20	22	24	26	28	30	32	34	36	38	40	m	
			4000	4000	3600	3200	2800	2500	2300	2000	1900	1800	1600	1500	1400	1270	1200	kg	
	6600 kg	37 m	2	14	16	18	20	22	24	26	28	30	32	34	36	37	m		
			4000	4000	3600	3200	2800	2500	2300	2000	1900	1800	1600	1500	1400	1300	kg		
	4950 kg	31 m	2	14	16	18	20	22	24	26	28	30	31	m					
			4000	4000	3600	3200	2800	2500	2300	2000	1900	1800	1700	kg					
	4950 kg	25 m	2	14	16	18	20	22	24	25	m								
			4000	4000	3600	3200	2800	2500	2300	2100	kg								

Montaggio – Montage – Erection – Montage – Montaje – Montagem

X (m)	kg
3,2x3,2	2300kg
3,8x3,8	4500kg
4,5x4,5	3800kg

S1210	
(m)	(kg)
3	610
6	1500
12	2500

S1700	
(m)	(kg)
3,9	1600
5,2	2100
11,7	4200



Meccanismi – Mechanisms – Mécanismes – Antriebe – Mecanismos

Sollevamento S15.40 e V15.40 Hoisting Levage Heben Elevación Elevação		1a	4 m/min	2500 kg	11 kW	S15.40	
		2a	20 m/min	2500 kg		V15.40	
		3a	40 m/min	1200 kg		20 kVA	
Sollevamento S20.60 e V20.60 Hoisting Levage Heben Elevación Elevação		1a	7 m/min	2500 kg	14.7 kW	S20.60	
		2a	28 m/min	2500 kg		28 kVA	
		3a	56 m/min	1200 kg		V20.60 24 kVA	
Sollevamento S20.40 e V20.40 Hoisting Levage Heben Elevación Elevação		1a	4 m/min	3000 kg	14.7 kW	S20.40	
		2a	20 m/min	3000 kg		28 kVA	
		3a	40 m/min	1500 kg		V20.40 24 kVA	
Sollevamento S25.60 e V25.60 Hoisting Levage Heben Elevación Elevação		1a	7 m/min	3000 kg	18.5 kW	S25.60	
		2a	28 m/min	3000 kg		34 kVA	
		3a	56 m/min	1500 kg		V25.60 28 kVA	
Sollevamento S15.40 e V15.40 Hoisting Levage Heben Elevación Elevação		1a	4 m/min	2000 kg	11 kW	S15.40 22 kVA	
		2a	20 m/min	2000 kg			
		3a	40 m/min	1200 kg			
Sollevamento S15.40 e V15.40 Hoisting Levage Heben Elevación Elevação		1a	2 m/min	4000 kg	11 kW	V15.40 20 kVA	
		2a	10 m/min	4000 kg			
		3a	20 m/min	2400 kg			
Sollevamento S20.60 e V20.60 Hoisting Levage Heben Elevación Elevação		1a	7 m/min	2000 kg	14.7 kW	S20.60 28 kVA	
		2a	28 m/min	2000 kg			
		3a	56 m/min	1200 kg			
Sollevamento S20.60 e V20.60 Hoisting Levage Heben Elevación Elevação		1a	3.5 m/min	4000 kg	14.7 kW	V20.60 24 kVA	
		2a	14 m/min	4000 kg			
		3a	28 m/min	2400 kg			
Carrello Trolleying Distribution Katzfahren Distribución Distribuição		1a	OP	5 m/min	2.2 kW	Potenza elettrica necessaria Puissance électrique nécessaire Necessary electric power Anschlusswert - Potencia	
		2a		25 m/min			4000 kg
		3a		50 m/min			2000 kg
Rotazione Slewing Orientation Schwenken Orientación Rotação		1a	0	→ 0.2	2.2 kW @ 1200rpm		
		2a	0	→ 0.6			
		3a	0	→ 0.9			
Traslocazione Travelling Translation Kranfahren Traslación Traslago		1a	0	→ 20	3.7 kW		

Rete elettrica – Réseau – Mains supply – Netzstrom – Red – Rede electrica 400V – 50 Hz

FM Gru s.r.l.
 via Emilia 11-29010 Pontenure PC ITALY
 tel. 0523/510446 ric.cst. fax 0523/510355
 www.fmgru.com e-mail: info@fmgru.com

FEM 1.001
 2000/14/CE



Documento commerciale non contrattuale
 Per tutte le informazioni tecniche riferirsi
 alle corrispondenti Istruzioni!

Unverbindliches Vertriebsdokument.
 Für technische Informationen, siehe die
 entsprechenden Anweisungen.

This commercial document is not legally
 binding. For any technical information, please
 refer to the corresponding instructions.

Documento comercial no contractual
 Para cualquier información técnica
 ver la notificación correspondiente.

Code: 15CA37C56A0
 Ed. Data Rev. Data
 1 05.06.03 05.06.03